

PRELIMINARY PLAT OF FOUR SEASONS AT INDIAN LAKES SUBDIVISION

OF LOT 1 IN INDIAN LAKES RESORT ASSESSMENT PLAT, BEING A PART OF SECTIONS 16, 21 AND 22, IN TOWNSHIP 40 NORTH, RANGE 10 EAST OF THE THIRD PRINCIPAL MERIDIAN, ACCORDING TO THE PLAT THEREOF RECORDED NOVEMBER 7, 2008 AS DOCUMENT R2008-163399, IN DUPAGE COUNTY, ILLINOIS.

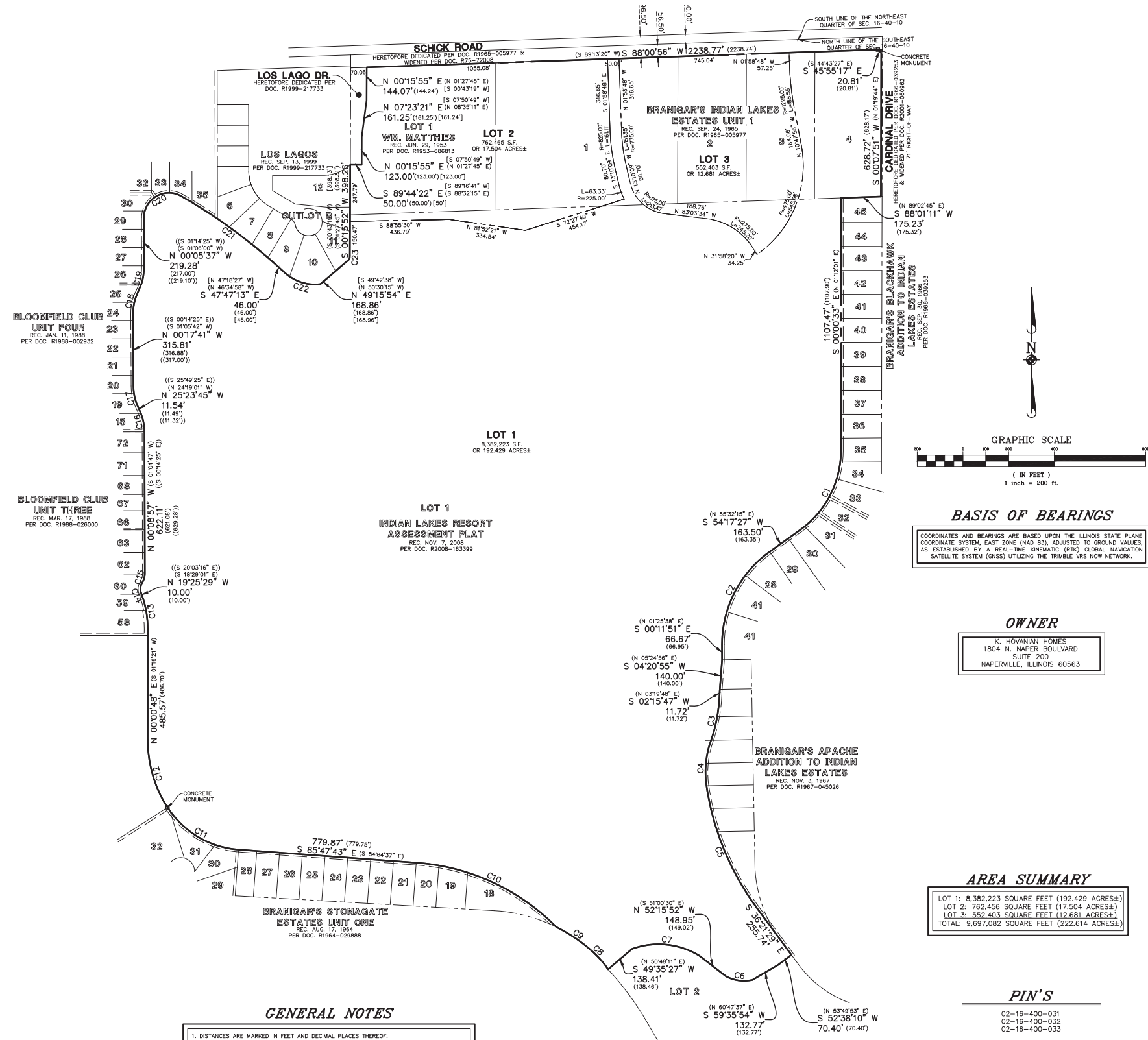
CURVE TABLE				
CURVE	RADIUS	LENGTH	CHORD BEARING	CHORD
C1	426.81'	404.45'	S27°18'52"W	389.49'
"	"	(404.52')	"	"
C2	499.84'	475.26'	S27°11'14"W	457.56'
"	"	(475.11')	"	"
C3	688.84'	208.45'	S10°36'36"W	207.66'
"	"	(208.29')	"	"
C4	409.58'	200.50'	S05°25'21"W	198.50'
"	"	(200.42')	"	"
C5	1197.82'	581.84'	S22°24'52"E	576.14'
"	"	(581.84')	"	"
C6	168.00'	118.78'	N82°21'42"W	116.32'
"	"	(118.78')	(S81°09'59"E)	"
C7	342.65'	304.80'	S84°16'25"E	294.85'
"	"	(304.78')	(S83°04'17"E)	(194.83')
C8	411.36'	100.59'	N40°58'03"W	100.34'
"	"	(100.60')	"	"
C9	702.47'	195.47'	N55°44'30"W	194.84'
"	"	(195.45')	"	"
C10	955.00'	689.40'	N65°20'06"W	674.53'
"	"	(689.50')	"	"
C11	405.00'	375.00'	N59°16'10"W	361.75'
"	"	(375.17')	"	"
C12	546.01'	312.25'	N16°21'54"W	308.01'
"	"	(312.07')	"	"
C13	428.99'	148.29'	N09°31'17"E	147.55'
"	"	(148.29')	"	"
"	"	((148.42'))	"	"
C14	50.54'	50.29'	N04°25'12"E	48.24'
"	"	(50.29')	"	"
"	"	((54.49'))	((50.09'))	"
C15	70.82'	40.53'	N16°32'02"E	39.98'
"	"	(40.53')	"	"
"	"	((40.49'))	"	"
C16	220.97'	98.34'	N12°53'55"W	97.53'
"	"	(98.30')	"	"
"	"	((220.70'))	((90.16'))	"
C17	220.97'	98.18'	N12°47'46"W	97.37'
"	"	(98.25')	"	"
"	"	((220.70'))	((98.50'))	"
C18	223.38'	104.50'	N13°18'20"E	103.55'
"	"	(104.55')	"	"
"	"	((223.38'))	((104.50'))	"
C19	223.38'	104.50'	N13°18'20"E	103.55'
"	"	(104.53')	"	"
"	"	((223.38'))	((104.51'))	"
C20	109.70'	230.07'	N60°17'24"E	190.16'
"	"	(229.42')	"	"
"	"	((108.49'))	((227.14'))	"
C21	2399.85'	517.54'	S53°57'54"E	516.54'
"	"	(517.54')	"	"
C22	196.93'	168.75'	S72°19'10"E	163.63'
"	"	(168.80')	"	"
"	"	[168.92']	"	"
C23	118.38'	14.00'	N03°39'23"E	13.99'
"	"	(14.00')	"	"
"	"	[14']	"	"

LEGEND

PROPERTY LINE	—————
LOT LINE	—————
EASEMENT LINE	-----
XXX.XX	MEASURED INFORMATION
(XXX.XX)	RECORD INFORMATION PER DOC. R2008-163399
((XXX.XX))	RECORD INFORMATION PER DOC. R88-002932 & PER DOC. R88-026000
[XXX.XX]	RECORD INFORMATION PER DOC. R1999-217733

GENERAL NOTES

- DISTANCES ARE MARKED IN FEET AND DECIMAL PLACES THEREOF.
- NO DIMENSION SHALL BE ASSUMED BY SCALE MEASUREMENT HEREON.
- THERE MAY BE ADDITIONAL TERMS, POWERS, PROVISIONS AND LIMITATIONS CONTAINED IN AN ABSTRACT DEED, LOCAL ORDINANCES, DEEDS, TRUSTS, COVENANTS OR OTHER INSTRUMENTS OF RECORD.
- COMPARE ALL POINTS BEFORE BUILDING BY SAME AND IMMEDIATELY REPORT ANY DISCREPANCIES TO THE SURVEYOR.
- Ø DENOTES CONCRETE MONUMENTS TO BE SET.
- IN ACCORDANCE WITH CHAPTER 765 ILCS SECTION 205/1 5/8" X 24" LONG IRON RODS WILL BE SET AT ALL PROPERTY CORNERS AND POINTS OF GEOMETRIC CHANGE.



BASIS OF BEARINGS
 COORDINATES AND BEARINGS ARE BASED UPON THE ILLINOIS STATE PLANE COORDINATE SYSTEM, EAST ZONE (NAD 83), ADJUSTED TO GROUND VALUES, AS ESTABLISHED BY A REAL-TIME KINEMATIC (RTK) GLOBAL NAVIGATION SATELLITE SYSTEM (GNSS) UTILIZING THE TRIMBLE VRS NOW NETWORK.

OWNER
 K. HOVANIAN HOMES
 1804 N. NAPER BOULEVARD
 SUITE 200
 NAPERVILLE, ILLINOIS 60563

AREA SUMMARY
 LOT 1: 8,382,223 SQUARE FEET (192.429 ACRES±)
 LOT 2: 762,456 SQUARE FEET (17.504 ACRES±)
 LOT 3: 552,403 SQUARE FEET (12.681 ACRES±)
 TOTAL: 9,697,082 SQUARE FEET (222.614 ACRES±)

PIN'S
 02-16-400-031
 02-16-400-032
 02-16-400-033

DATE	
DESCRIPTION	
CHANGED BY	

Manhard CONSULTING LTD.
 2200 West Higgins Road, Suite 100, Naperville, IL 60563
 Phone: 630-206-1000
 Fax: 630-206-1001
 Email: info@manhardconsulting.com
 Website: www.manhardconsulting.com

FOUR SEASONS AT INDIAN LAKES
 VILLAGE OF BLOOMINGDALE, ILLINOIS
 PRELIMINARY PLAT OF SUBDIVISION

PROJ. NO.: SJP
 PROJ. ASSOC.: SJP
 DRAWN BY: MJS
 DATE: 08/28/17
 SCALE: 1"=200'
 SHEET
1 of 1
 KHH.BDLO1