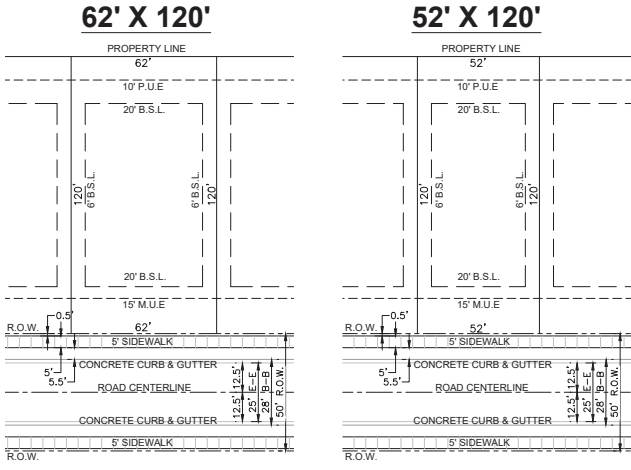


TYPICAL LOT LAYOUT



LAND USE SUMMARY

LAND USE	QUANTITY	AREA
• 62' LOTS	146	36.5 AC
• 52' LOTS	374	82.5 AC
• MODEL PARK	15	4.5 AC
TOTAL LOT COUNT	535	123.5 AC
TOTAL OPEN SPACE		67.6 AC
TOTAL RESIDENTIAL		190.8 AC
TOTAL SITE (INCLUDING COMMERCIAL - 31.5 AC)		±222.3 AC

CURRENT PARCEL ZONED: RR PD
PROPOSED ZONING: R-2C PD (FOR RESIDENTIAL)

DESIGN STANDARDS

- 50' R.O.W. LOCAL STREETS
- LOT SETBACKS:
 20' FRONT YARD
 20' REAR YARD
 6' SIDE YARD

PUBLIC BIKE TRAIL

- PUBLIC BIKE TRAIL DEDICATION
 - 8' WIDE ASPHALT TRAIL
 (ON PERIMETER OF PROJECT)

OPEN SPACE SUMMARY

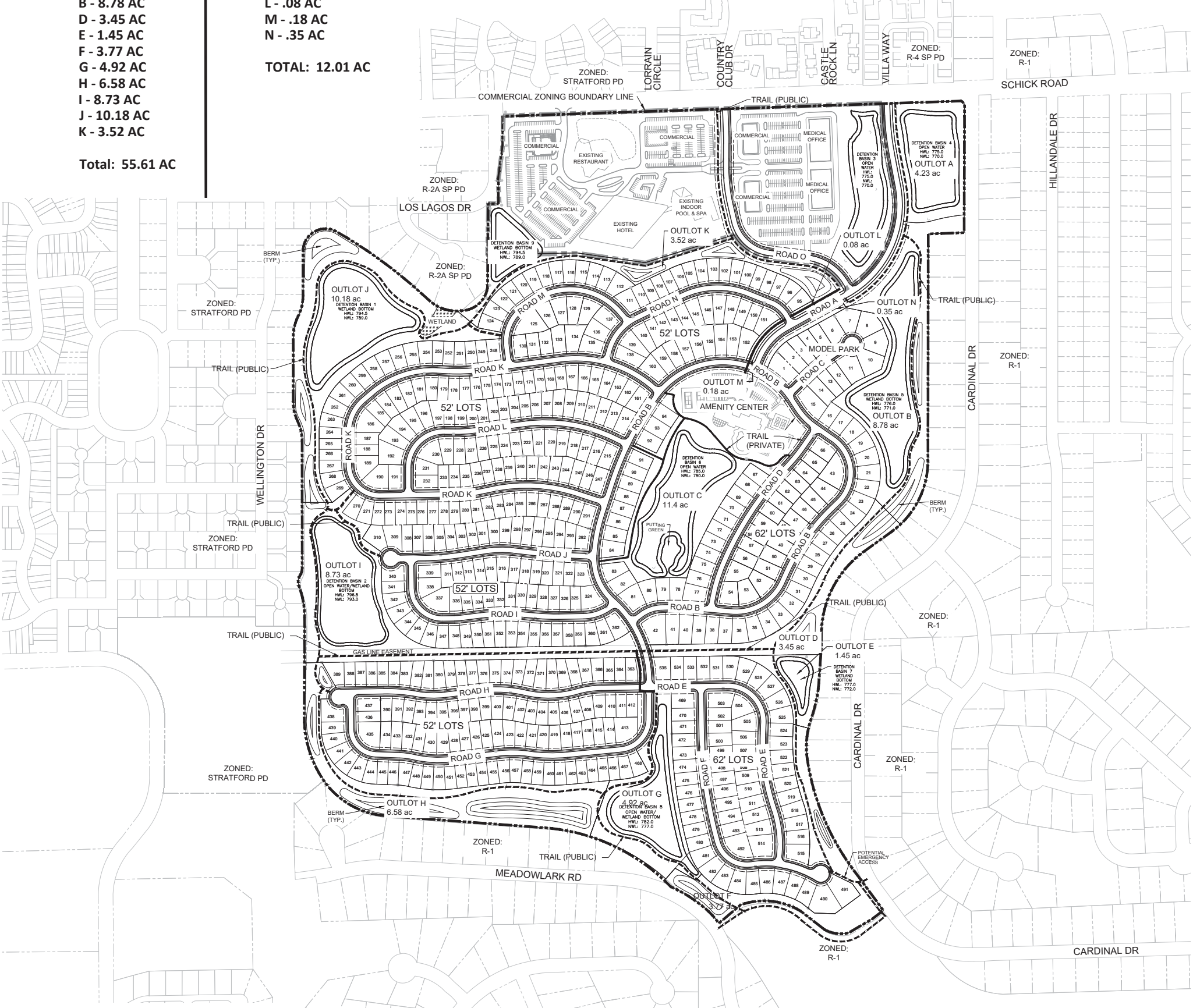
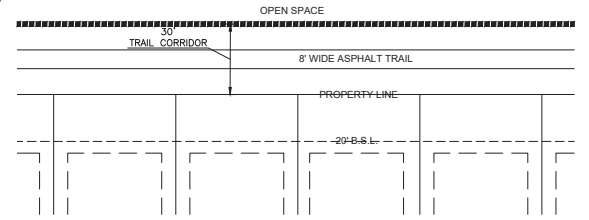
PUBLIC OPEN SPACE | **PRIVATE OPEN SPACE**

- A - 4.23 AC
- B - 8.78 AC
- D - 3.45 AC
- E - 1.45 AC
- F - 3.77 AC
- G - 4.92 AC
- H - 6.58 AC
- I - 8.73 AC
- J - 10.18 AC
- K - 3.52 AC

Total: 55.61 AC

- C - 11.4 AC
- L - .08 AC
- M - .18 AC
- N - .35 AC

TOTAL: 12.01 AC



LEGEND

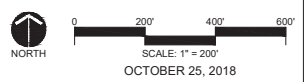
- BOUNDARY
- EASEMENT
- DETENTION POND
- PUBLIC BIKE TRAIL
- PRIVATE BIKE TRAIL
- ZONING BOUNDARY

OPEN SPACE
(NOT A PART)



FOUR SEASONS AT INDIAN LAKES

Site Plan
 Bloomingdale, IL



OCTOBER 25, 2018

C:\66159443\CAD\Drawings\66159443_05_Letting_Dwg_2018-10-24.dwg Saved: Oct. 26, 18 9:49 AM Printer: Oct. 26, 18 9:50 AM