



WASTE SOLUTIONS
INC
312-522-1115

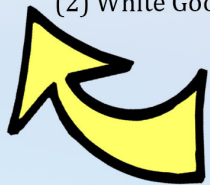
ATTENTION RESIDENTS OF BLOOMINGDALE



You Are Allowed 2 Cubic Yards Of Items Per Collection Day!



- (4) Cabinets or Drawer and Dresser
- (2) End Tables/Night Stands, and coffee table
- (2) White Goods (washer and dryer) accepted

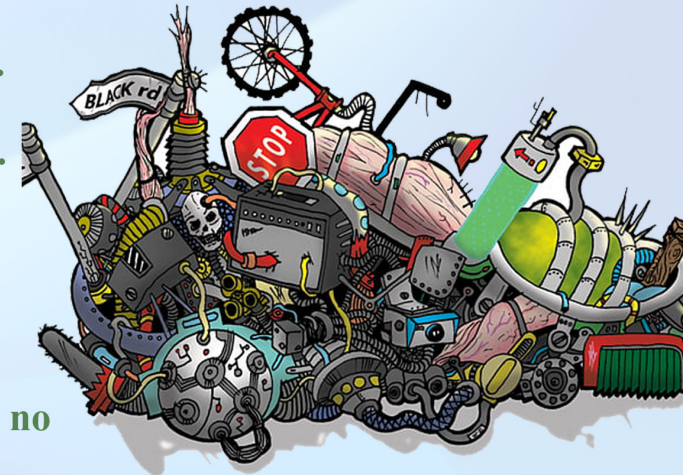


**2 Cubic Yards Of Bulk
Item Accepted**

- *Bulk is an item over 50lbs that cannot be set inside the Refuse cart.
- *Collection outside of the cart is restricted to less than 2 cubic yards.

Examples of 2 cubic yards

- *Mattress and boxspring set
- *8 Rolls of Carpet in 5' length
- *8 Bundles of Construction Material no greater than 4ft x 4ft
- ***(1) 6-foot sofa** (Note: sectional would need to be set out in separate weeks to stay under the 2cy limit, or pay additional)
- *1 Headboard and Bed Frame
- *2 Recliner Chairs
- *1 Dining Table and 4 Chairs



**Not
Accepted**

If Left This Way, Only
2 cubic yards Item Will
Be Removed

If the volume exceeds 2 cubic yards, please call SBC 48 hours in advance, to arrange collection and to make payment of \$25 for each additional cubic yard

Bulk amounts of general household waste needs to be easy to collect, and easy to dispose of. General loose material left at the curb without the proper bundling will be left for the proper preparation.